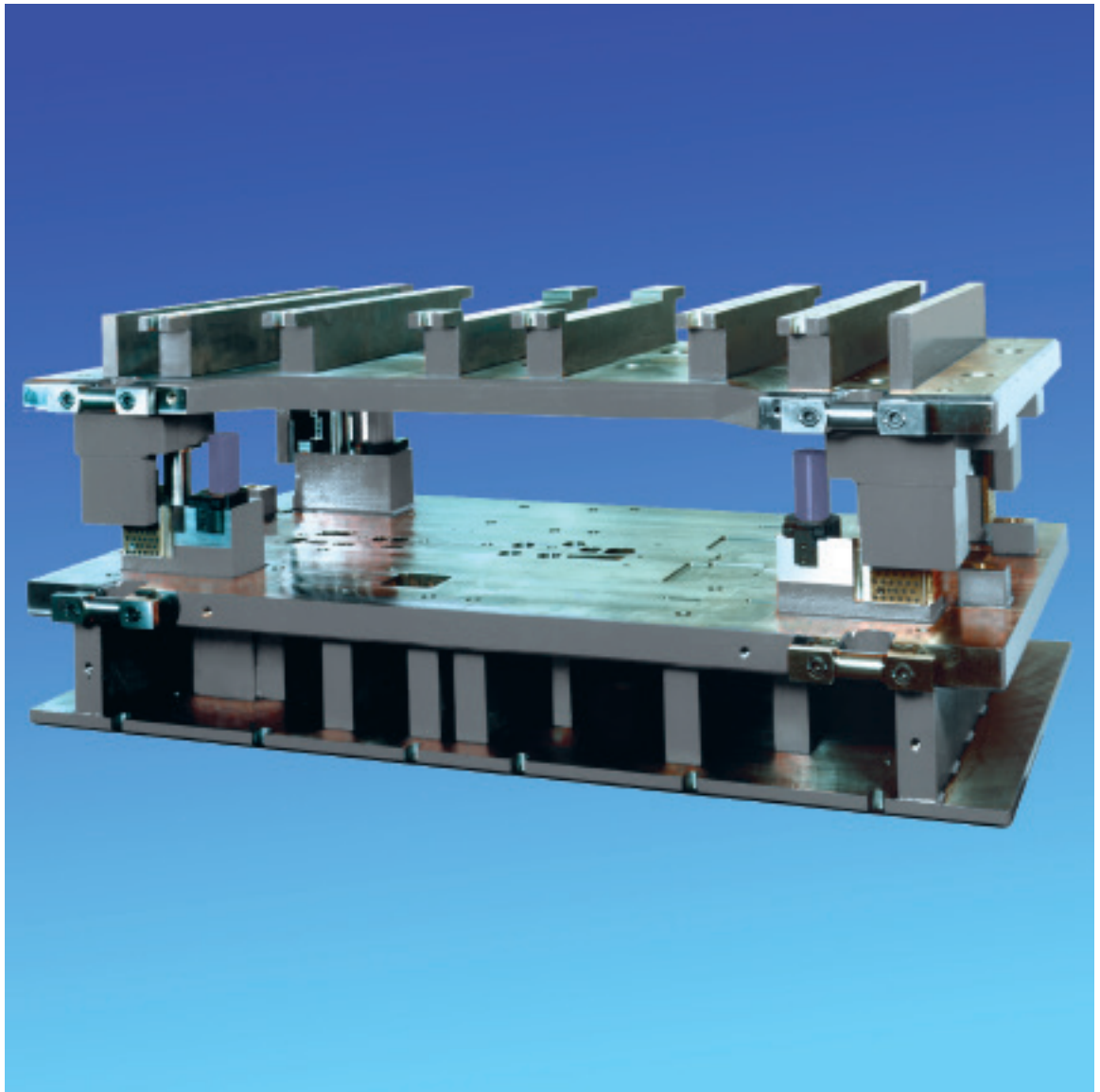




Anchor Danly



Anchor Danly

www.anchoranly.com
Check our website for the latest
technical information.

TABLE OF CONTENTS

Introduction.....	2
PLAIN BEARING DIE SETS	
Standard Die Sets.....	3
Econoline Die Sets.....	4
Economy Die Sets.....	5
Back Post Die Sets.....	6 & 7
Center Post Die Sets.....	8
Diagonal Post Die Sets.....	9
Four Post Die Sets.....	10 & 11
BALL-BEARING DIE SETS	
Ball-Bearing Die Set Operating Data & Design Selection.....	12
Standard Die Sets.....	13
Two Post Die Sets.....	14
Four Post Die Sets.....	15

Anchor Danly provides die sets to the metalworking industry throughout Canada, the United States and Europe. We are proud of the fact that we supply our die sets to the Automotive, Metal Stamping, Farm Implement and Home Appliance sectors as well as Electronics and Hardware.

Anchor Die Sets constructs standard models in steel or aluminum and we welcome specials. Anchor can build die sets from 4" wide x 4" long to 120" wide x 360" long.

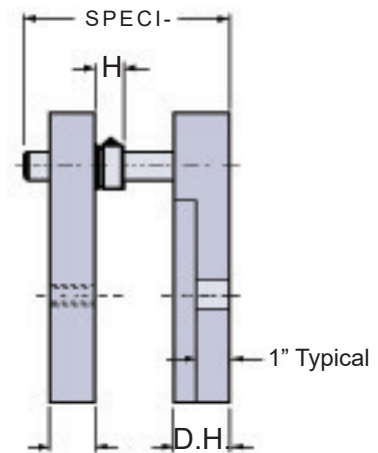
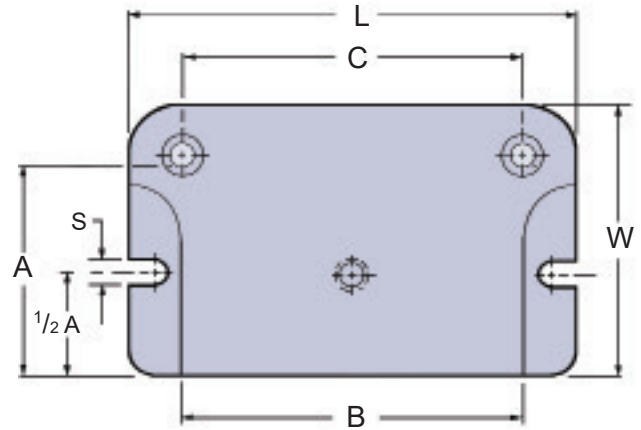
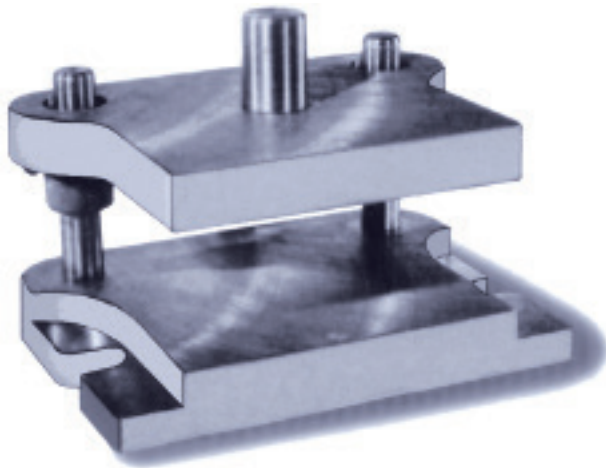
Steel plates are also offered through the Die Set group.



STANDARD DIE SETS

Mild Steel Plate – Stress Relieved upon Request
Also available in 4140 steel and Aluminum

Lamina Pins & Bronze Plated Clamp Type Bushings



STOCKED FOR PROMPT SHIPMENT

Prices available on request – F.O.B. our Plant
Sales tax extra if applicable

A	B	C	S	W	L	P.H.	D.H.	H.	Pin Dia.	Pin Len.	Weight
3	3	3	13/16	4 1/2	5 1/2	1	1 1/4	1 1/4	3/4	SPECIFY WHEN ORDERING	15
3	4	4		4 5/8	6 5/8	1	1 1/4	1 1/4	3/4		20
4	4	4		5 5/8	6 5/8	1	1 1/4	1 1/4	3/4		25
4	6	6		6	9	1 1/4	1 1/2	1 1/4	1		40
4	8	8		6	11	1 1/4	1 1/2	1 1/4	1		50
5	5	5		7	8	1 1/4	1 1/2	1 1/4	1		45
5	7	7		7	10	1 1/4	1 1/2	1 1/4	1		55
5	9	9	7	12	1 1/4	1 1/2	1 1/4	1	65		
6	6	6	1 1/16	8	9	1 1/4	1 1/2	1 1/4	1	SPECIFY WHEN ORDERING	55
6	8	8		8	11	1 1/4	1 1/2	1 1/4	1		70
6	10	10		8 1/4	13 1/4	1 1/2	1 3/4	1 1/2	1 1/4		100
7	7	7		9 1/4	10 1/4	1 1/4	1 1/2	1 1/2	1 1/4		75
7	9	9		9 1/4	12 1/4	1 1/2	1 3/4	1 1/2	1 1/4		105
8	8	8		10 1/4	11 1/4	1 1/2	1 3/4	1 1/2	1 1/4		120
8	10	10		10 1/4	13 1/4	1 1/2	1 3/4	1 1/2	1 1/4		125
OTHER SIZES AVAILABLE TO YOUR SPECIFICATIONS											

Special thickness can be supplied for an additional charge.

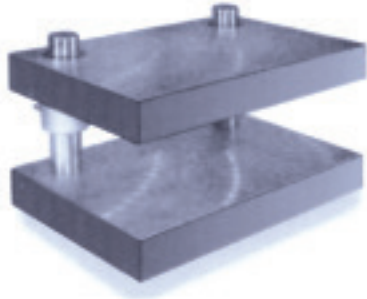
Welded shank available, price on request.

SHANKS AVAILABLE

- 1 1/2 dia. x 2 1/8 (1 1/4-12 NF)
- 2 dia. x 2 7/8 (1 1/4-12 NF)
- 2 1/2 dia. x 2 7/8 (1 1/4-12 NF)
- 3 dia. x 3 (1 1/4-12 NF)

When Ordering Specify:

1. Type Standard
2. Dimensions A & B
3. Thickness P.H. and D.H.
4. Length of Pins
5. Size and location of Shank if required
6. Bushings if other than standard



ECONOLINE DIE SETS

Mild Steel Plate

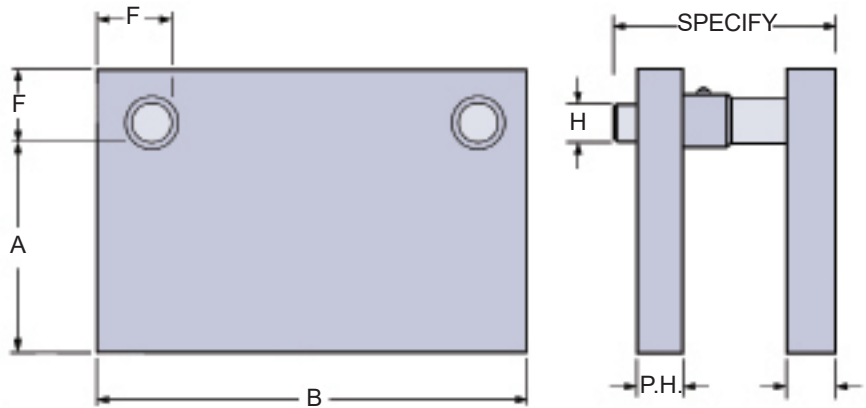
- Prices available on request – F.O.B. our plant
- Sales tax extra if applicable

ECONOLINE Die Sets are a high grade commercial die set suitable for most precision requirements.

ECONOLINE Die Sets are completely assembled before shipment.

ECONOLINE Die Sets are equipped with Lamina Bronze Plated Press Fit Shoulder Busings complete with grease fittings and steel guide pins hardened and ground.

ECONOLINE Die Sets are torch-cut from Prime Plate and Blanchard ground.



LENGTH OF GUIDE PINS AVAILABLE:

5, 5-1/2, 6, 6-1/2, 7, 7-1/2 or 8" long at no extra charge.

Longer lengths available.

"F" Dimension is 2-1/2" with 1-1/2" diameter pins.

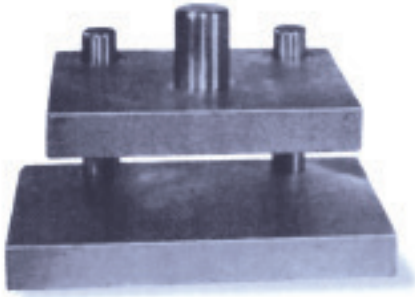
SHANKS AVAILABLE

- 1 1/2" dia. x 2 1/8 (1-1/4-12 NF)
- 2" dia. x 2 7/8 (1-1/4-12 NF)
- 2 1/2" dia x 2 7/8 (1-1/4-12 NF)
- 3" dia. x 3 (1-1/4-12 NF)

SIZE	PIN	P.H.	D.H.	WEIGHT	P.H.	D.H.	WEIGHT	P.H.	D.H.	WEIGHT	P.H.	D.H.	WEIGHT
6	8	1 1/2	150	150	150	200	150	200	150	200	200	200	60
	10												70
	12												90
	14												105
	18												120
8	8	1 1/2	150	150	150	200	150	200	150	200	200	200	75
	10												85
	12												95
	14												110
	18												125
10	10	1 1/2	150	150	150	200	150	200	150	200	200	200	110
	12												125
	14												135
	18												155
	18												180
12	12	1 1/2	150	150	150	200	150	200	150	200	200	200	125
	14												135
	18												155
14	14	1 1/2	150	150	150	200	150	200	150	200	200	200	160
	18												185
	18												205
14	14	1 1/2	150	150	150	200	150	200	150	200	200	200	210
	18												235
	18												270

When ordering specify:

1. Type ECONOLINE
2. Dimension A & B
3. Thickness P.H. and D.H.
4. Pin Length
5. Size and location of Shank if required



ECONOMY DIE SETS

Mild Steel Plate

- Prices available on request – F.O.B. our plant
- Sales tax extra if applicable

ECONOMY DIE SETS are presently utilized in numerous applications within the Die Making Industry.

Lamina Guide Pins...Hardened and ground

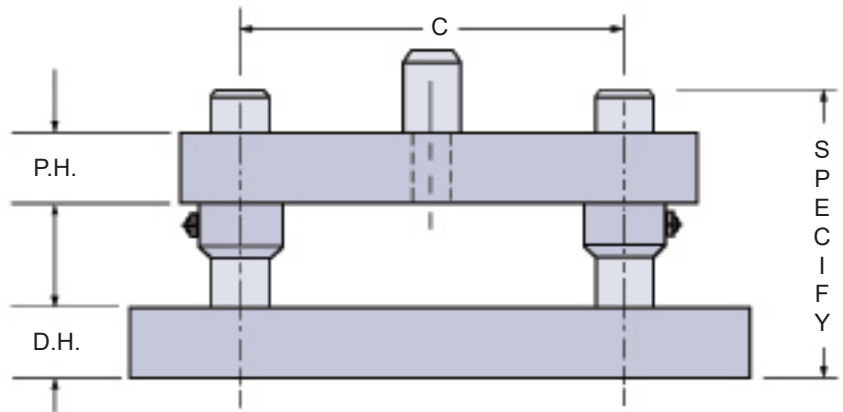
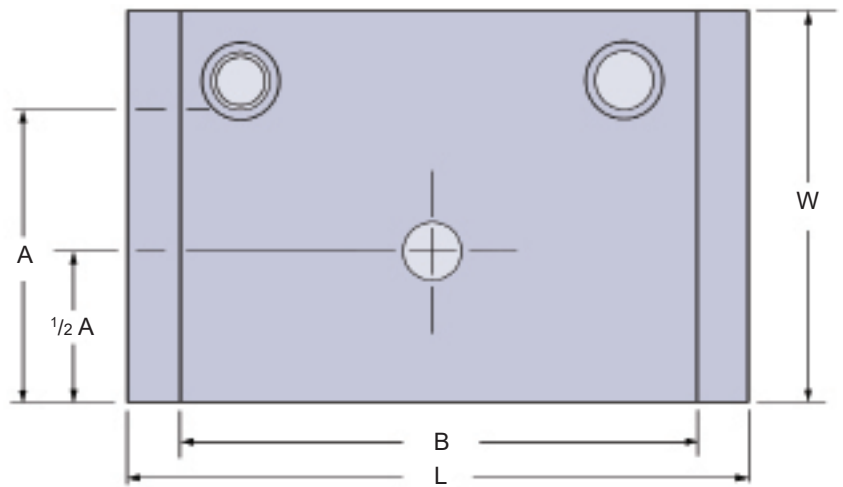
Lamina Bronze Plated Busings ...Press Fit Type with grease fitting

Torch cut from Prime Steel Plate, Blanchard ground and bored (not reamed) to produce an accurate economical Die Set

Length of Guide Pins available:
 5, 5-1/2, 6, 6-1/2, 7 or 8" long
 At no extra charge
 Longer lengths available

SHANKS AVAILABLE

- 1 1/2" dia. x 2 1/8 (1-1/4-12 NF)
- 2" dia. x 2 7/8 (1-1/4-12 NF)



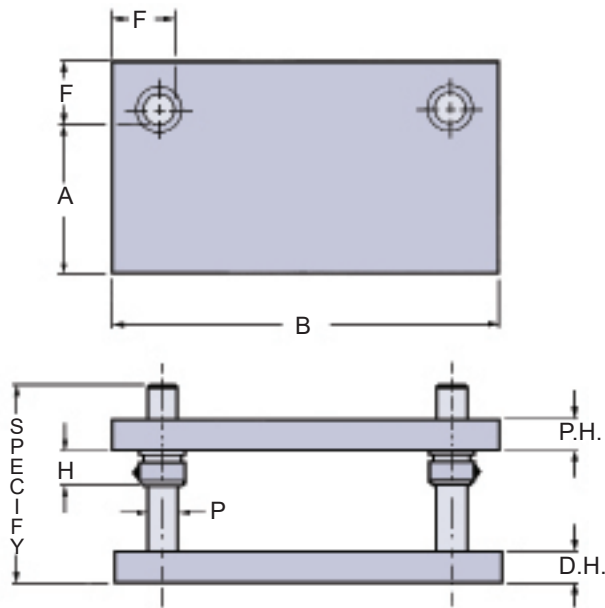
A	B	C	L	W	P.H.	D.H.	Pin Dia.	Pin Length	Approx. Weight
4	6	3 1/2	8	5 3/4	1 1/4	1 1/4	1	S P E C I F Y	35 lbs
6	6	3 1/2	8	7 3/4	1 1/4	1 1/4	1		45 lbs
6	8	5 1/2	10	7 3/4	1 1/4	1 1/4	1		55 lbs

When ordering specify:

1. Type Economy
2. Dimension A & B
3. Pin Length
4. Shank diameter if required

BACK-POST DIE SETS Type B2

Mild Steel Plate – Stress Relieved upon Request
Also available in 4140 steel and Aluminum



- **Special Die Sets are manufactured in any size or shape to your specifications.**
- **Prices available on request – F.O.B. our plant**
- **Sales tax extra if applicable**
- **Type B2 Die Sets are made to order and may not be returned for credit.**

Dimensions							
P	1	1 ¹ / ₄	1 ¹ / ₂	1 ³ / ₄	2	2 ¹ / ₂	3
F	2	2 ¹ / ₄	2 ¹ / ₂	3	3 ¹ / ₄	3 ³ / ₄	4 ¹ / ₂
H	1 ¹ / ₄	1 ¹ / ₂	1 ¹ / ₂	1 ¹ / ₂	1 ¹ / ₂	2	2

SHANKS AVAILABLE

1 ¹ / ₂ " dia. x 2 ¹ / ₈	(1-1/4-12 NF)
2" dia. x 2 ⁷ / ₈	(1-1/4-12 NF)
2 ¹ / ₂ " dia x 2 ⁷ / ₈	(1-1/4-12 NF)
3" dia. x 3	(1-1/4-12 NF)

When ordering specify:

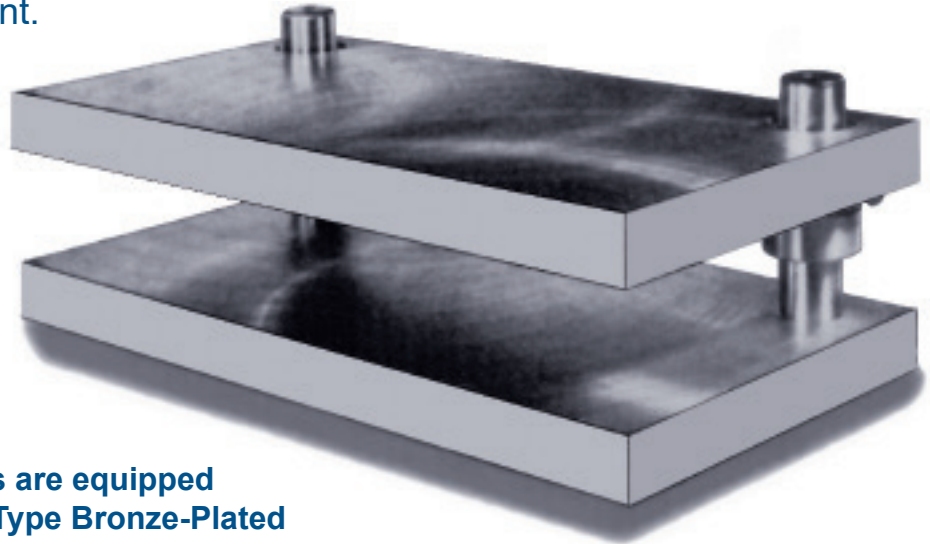
1. Type B2
2. Dimension A & B
3. Thickness P.H. and D.H.
4. Pin Diameter and Length
5. Size and location of Shank if required
6. Bushings if other than standard

		B												
		8	10	12	14	16	18	20	22	24	26	28	30	32
A	6	20	25	30	35	40	45	50	55	60	65	70	75	80
	8	25	30	35	40	50	55	60	70	75	80	85	90	95
	10	30	35	45	50	60	70	75	85	90	95	100	115	120
	12	1 ¹ / ₂ " Pins		50	60	70	80	85	95	100	110	120	130	140
	14	1 ¹ / ₂ " Pins		70	80	85	90	105	120	130	140	150	160	
	16	1 ¹ / ₂ " Pins		85	95	110	120	135	145	155	170	180		
	18	1 ³ / ₄ " Pins		110	125	135	145	160	175	185	200			
	20	1 ³ / ₄ " Pins		135	150	165	175	190	205	215				
	22	1 ³ / ₄ " Pins		160	175	190	205	220	235					
	24	1 ³ / ₄ " Pins		190	205	225	240	255						
	26	1 ³ / ₄ " Pins		220	240	255	275							
	28	1 ³ / ₄ " Pins		255	275	295								
	30	2" Pins		290	310									
	32	2" Pins		335										
	34	2 ¹ / ₂ " Pins												
	36	2 ¹ / ₂ " Pins												
	38	2 ¹ / ₂ " Pins												
	40	2 ¹ / ₂ " Pins												
42	2 ¹ / ₂ " Pins													
44	Die space sizes are grouped by colour shading with suggested guide pins diameters.													
46	Box numbers indicate the approximate weight of a single plate 1" thick.													
48	Box numbers indicate the approximate weight of a single plate 1" thick.													



BACK-POST DIE SETS

Type B2, cont.



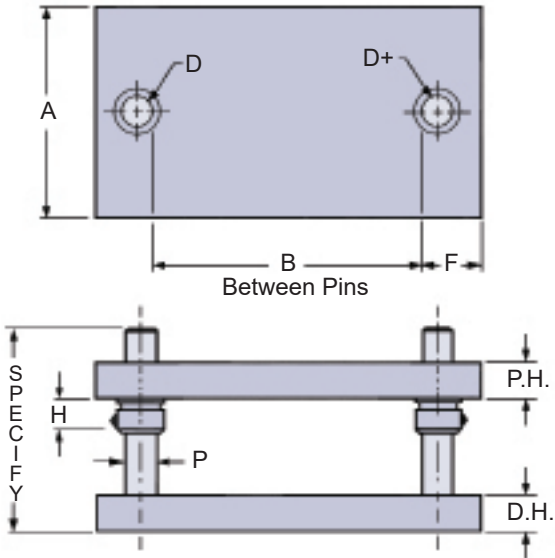
**Anchor Die Sets are equipped
with Lamina Clamp-Type Bronze-Plated
Shoulder Bushings**

B																								A		
34	36	38	40	42	44	46	48	50	52	54	56	58	60	62	64	66	68	70	72	74	76	78	80		82	84
85	90	95	100	105	115	120	125	130	135	140	145	150	160	170	175	180	185	190	195	200	205	220	230	235	240	6
110	115	120	130	135	140	150	155	160	170	175	185	190	195	205	210	215	225	230	235	245	250	270	275	280	290	8
130	140	145	155	165	170	180	185	195	200	210	215	225	230	240	250	255	265	270	280	285	295	315	320	330	340	10
150	160	170	180	185	195	205	215	225	230	240	250	260	270	275	285	295	305	310	320	340	350	360	370	380		12
170	180	190	200	210	220	230	240	250	260	270	285	295	305	315	325	335	345	355	365	385	395	405	415	425		14
190	205	215	225	235	250	260	270	280	295	305	315	325	340	350	360	370	385	395	405	430	440	450	460	475		16
210	225	235	250	260	275	285	300	310	325	335	350	360	375	395	405	420	435	445	460	470	485	495	510			18
230	245	260	270	285	300	315	325	340	355	365	380	395	410	430	445	460	475	485	500	515	530	540	555			20
250	265	280	295	310	325	340	355	375	390	405	420	435	450	465	480	495	515	530	545	560	575	590	605			22
270	285	305	320	335	350	375	390	405	420	440	455	470	485	505	520	535	550	570	585	600	615	635	650			24
290	310	325	340	360	375	400	420	435	455	470	490	505	525	540	555	575	590	610	625	645	660	680				26
310	330	345	365	385	400	425	445	465	485	500	520	540	560	575	595	615	630	650	670	690	705	725				28
330	350	370	390	415	435	455	475	495	515	535	555	575	595	615	630	650	670	690	710	730	750					30
355	375	400	420	440	460	480	500	525	545	565	585	605	630	650	670	690	710	735	755	775	795					32
375	400	420	440	465	485	510	530	555	575	595	620	640	665	685	705	730	750	775	795	820						34
	420	440	465	490	510	535	560	580	605	630	650	675	700	720	745	770	790	815	840	860						36
		465	490	515	540	560	585	610	635	660	685	710	735	760	780	805	830	855	880							38
			510	540	565	590	615	640	665	690	715	745	770	795	820	845	870	895	920							40
				570	600	625	655	680	710	735	760	790	815	845	870	900	925	955								42
					625	655	680	710	740	765	795	825	850	880	910	935	965									44
						680	710	740	770	800	830	860	885	915	945	975										46
							740	770	800	830	860	890	920	955	985	1015										48

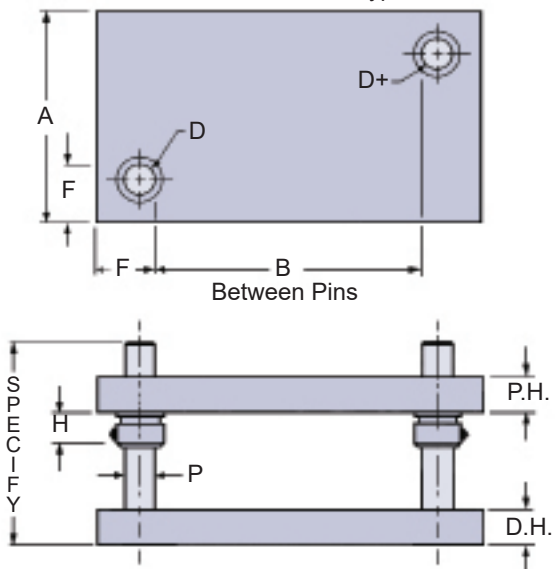




CENTER PINS, Type C2



DIAGONAL PINS, Type D2

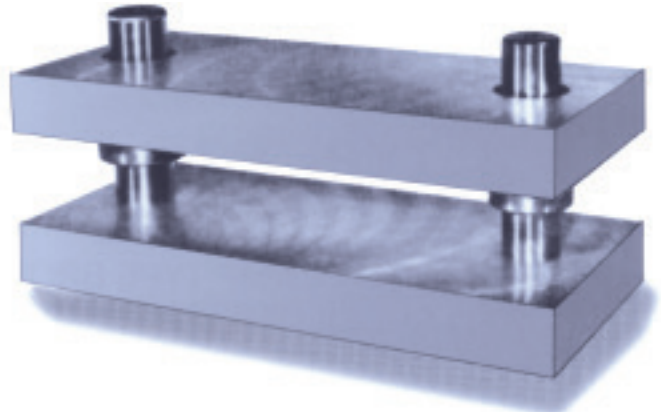


Dimensions							
P	1	1 1/4	1 1/2	1 3/4	2	2 1/2	3
F	2	2 1/4	2 1/2	3	3 1/4	3 3/4	4 1/2
H	1 1/4	1 1/2	1 1/2	1 1/2	1 1/2	2	2

- When ordering specify:**
1. Type C2 or D2
 2. Dimension A & B
 3. Thickness P.H. and D.H.
 4. Pin Diameter and Length
 5. Size and location of Shank if required
 6. Bushings if other than standard

CENTER-POST DIE SETS Type C2

Mild Steel Plate – Stress Relieved upon Request
Also available in 4140 steel and Aluminum



1-1/4" & 1-1/2" Pins

		B												
		8	10	12	14	16	18	20	22	24	26	28	30	32
A	6	20	25	30	30	35	40	45	50	50	55	60	60	65
	8	30	35	40	45	50	55	60	65	70	75	80	85	85
	10		45	50	55	60	70	75	80	85	90	100	105	110
	12	1 1/2" and	60	70	75	80	90	95	105	115	120	125	135	
	14	1 3/4" Pins		80	90	95	105	110	125	130	140	150	160	
	16				100	110	125	130	140	150	165	175	180	
	18		1 3/4" and			125	140	150	160	175	185	195	205	
	20		2" Pins				155	165	180	195	205	215	230	
	22							185	200	210	225	240	250	
	24								215	230	245	260	275	
	26					2" & 2 1/2" Pins				250	265	280	295	
	28										285	305	320	
	30											325	340	
	32												375	
	34													
	36													
38														
40														
42									Die space sizes are grouped by colour shading with suggested guide pins diameters.					
44									Box numbers indicate the approximate weight of a single plate 1" thick.					
46														
48														





DIAGONAL-POST DIE SETS Type D2

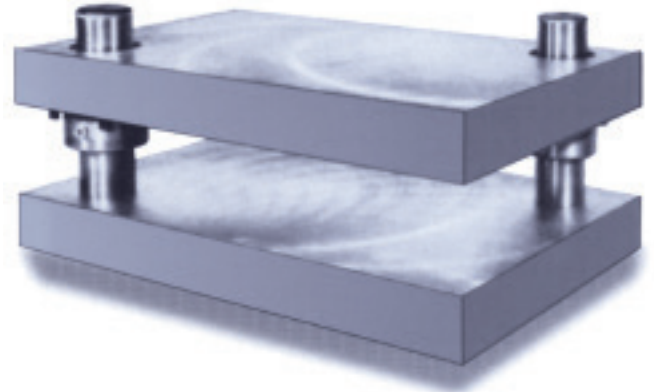
Mild Steel Plate – Stress Relieved upon Request
Also available in 4140 steel and Aluminum

SHANKS AVAILABLE

1 1/2" dia. x 2 1/8	(1-1/4-12 NF)
2" dia. x 2 7/8	(1-1/4-12 NF)
2 1/2" dia x 2 7/8	(1-1/4-12 NF)
3" dia. x 3	(1-1/4-12 NF)

Anchor Die Sets are equipped with Lamina Clamp-Type Bronze-Plated Shoulder Bushings

- **Special Die Sets are manufactured in any size or shape to your specifications.**
- **Prices available on request – F.O.B. our plant**
- **Sales tax extra if applicable**
- **Type C2 and D2 Die Sets are made to order and may not be returned for credit.**



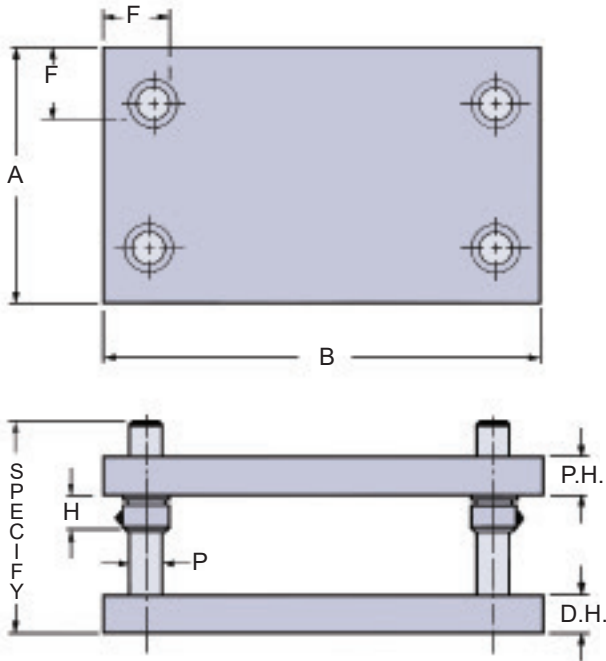
B																					A	
34	36	38	40	42	44	46	48	50	52	54	56	58	60	62	64	66	68	70	72	74		76
70	70	75	80	85	90	90	95	100	100	105	110	115	115	120	152	130	130	135	140	140	145	6
95	100	105	110	115	115	120	125	130	140	140	145	150	155	160	165	170	175	180	185	190	195	8
120	125	130	135	145	150	155	160	165	170	180	185	190	195	200	210	215	220	225	230	235	245	10
145	150	160	165	170	180	185	195	200	205	215	220	230	235	240	250	255	265	270	275	285	290	12
170	175	185	190	200	210	215	225	235	240	250	260	265	275	285	290	300	305	315	325	335		14
190	200	210	220	230	240	250	255	265	275	285	295	305	315	325	330	340	350	360	370	385		16
215	225	235	245	260	270	280	290	300	310	320	330	340	350	360	370	380	390	400	410	425	435	18
240	250	265	275	285	300	310	320	340	355	365	375	390	400	410	425	435	445	460	470			20
265	275	290	300	315	330	350	360	375	390	400	415	425	440	450	465	480	490	505	515			22
290	300	315	330	345	360	380	395	410	425	435	450	465	480	495	510	520	535	550	565			24
310	325	340	360	375	390	415	430	445	460	475	490	505	520	535	550	565	580	595	610			26
335	350	370	385	400	420	445	460	475	495	510	525	545	560	575	590	610	625	640				28
360	375	395	415	440	460	475	495	510	530	545	565	580	600	615	635	650	670	685				30
395	415	435	450	470	490	510	525	545	565	585	600	620	640	660	675	696	715					32
420	440	460	480	500	520	540	560	580	600	620	640	660	680	700	720	740	760					34
	460	485	510	530	550	570	595	615	635	655	675	700	720	740	760	785	805					36
		515	535	560	580	605	625	650	670	695	715	735	760	780	805	825						38
			565	590	610	635	660	680	705	730	755	775	800	825	845							40
				620	640	665	690	715	740	765	790	815	840	865	890							42
					675	700	725	750	775	800	825	855	880	905								44
						730	760	785	810	840	865	890	920	945								46
							790	820	845	875	905	930	960									48



FOUR-POST DIE SETS Type R4

Mild Steel Plate – Stress Relieved upon Request
Also available in 4140 steel and Aluminum

- Right front guide pin is offset .25" to prevent accidental reversing
- Special Die Sets are manufactured in any size or shape to your specifications
- Prices available on request – F.O.B. our plant
- Sales tax extra if applicable
- R4 Die Sets are made to order and may not be returned for credit



Dimensions							
P	1	1 1/4	1 1/2	1 3/4	2	2 1/2	3
F	2	2 1/4	2 1/2	3	3 1/4	3 3/4	4 1/2
H	1 1/4	1 1/2	1 1/2	1 1/2	1 1/2	2	2

SHANKS AVAILABLE

1 1/2" dia. x 2 1/8	(1-1/4-12 NF)
2" dia. x 2 7/8	(1-1/4-12 NF)
2 1/2" dia x 2 7/8	(1-1/4-12 NF)
3" dia. x 3	(1-1/4-12 NF)

When ordering specify:

1. Type R4
2. Dimension A & B
3. Thickness P.H. and D.H.
4. Pin Diameter and Length
5. Size and location of Shank if required
6. Bushings if other than standard

1" Pins

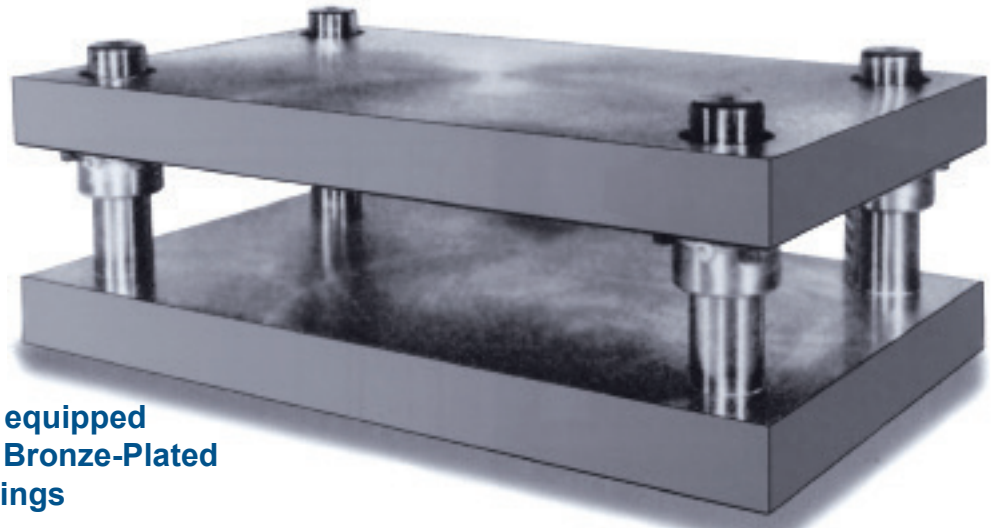
1 1/4" Pins

		B															
		10	12	14	16	18	20	22	24	26	28	30	32	34			
A	6	15	20	25	30	30	35										
	8	25	30	30	35	40	45	50	55	60	65	70					
	10	30	35	40	45	50	60	65	70	75	80	85	95	100			
	12		40	50	55	65	70	75	85	90	100	105	110	120			
	14			55	65	75	80	90	100	105	115	125	130	140			
	16				75	85	95	105	110	120	130	140	150	160			
	18		1 1/2" Pins			95	105	115	125	135	145	160	170	180			
	20					115	130	140	150	165	175	185	200				
	22						140	155	165	180	195	205	220				
	24							170	180	195	210	225	240				
	26						1 1/4" Pins			200	215	230	245	260			
	28										230	245	260	280			
	30											265	280	300			
	32														300	320	
	34														2" Pins		340
	36																
	38																
40		Die space sizes are grouped by color shading with suggested guide pins diameters. Box numbers indicate the approximate weight of a single plate 1" thick.															
42																	
44																	
46																	
48																	
50																	

FOUR-POST DIE SETS

Type R4, cont.

Mild Steel Plate – Stress Relieved upon Request
 Also available in 4140 steel and Aluminum



**Anchor Die Sets are equipped
 with Lamina Clamp-Type Bronze-Plated
 Shoulder Bushings**

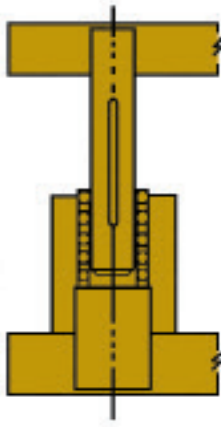
Anchor will build die sets up to 120" wide x 360" long.

B																						A			
36	38	40	42	44	46	48	50	52	54	56	58	60	62	64	66	68	70	72	74	76	78		80	82	
																								6	
																									8
105	110	115	125	130	135	140	145	150	160	165	170	175	180	185	195	200	205	210	215	220	230	235	240	10	
125	135	140	145	155	160	170	175	180	190	195	205	210	215	225	230	240	245	255	260	265	275	280	290	12	
145	155	165	170	180	190	195	205	215	220	230	235	245	255	260	270	280	285	295	305	310	320	330	335	14	
170	180	185	195	205	215	225	235	245	255	260	270	280	290	300	310	320	330	335	345	355	365	375	385	16	
190	200	210	220	230	240	255	265	275	285	295	305	315	325	335	350	360	370	380	390	400	410	420	430	18	
210	220	235	245	255	270	280	295	305	315	330	340	350	365	375	385	400	410	420	435	445	455	470		20	
230	245	255	270	285	295	310	320	335	350	360	375	385	400	410	425	440	450	465	475	490	500	515		22	
255	265	280	295	310	325	335	350	365	380	395	405	420	435	450	465	480	490	505	520	535	550	560		24	
275	290	305	320	335	350	365	380	395	410	425	440	455	470	485	500	520	535	550	565	580	595	610		26	
295	310	330	345	360	375	395	410	425	445	460	475	490	510	525	540	555	575	590	605	625	640			28	
315	335	350	370	385	405	420	440	455	475	490	510	525	545	560	580	595	615	630	650	670	685			30	
335	355	375	395	410	430	450	470	485	505	525	545	560	580	600	620	635	655	675	695	710	730			32	
360	380	400	420	440	460	480	500	520	535	555	575	595	615	635	655	675	740	715	735	755				34	
380	400	420	445	465	485	505	525	550	570	590	610	630	655	675	695	715	780	670	780	800				36	
	425	445	465	490	510	535	555	580	600	625	645	670	690	710	735	755	820	800	825					38	
		470	490	515	540	560	585	610	630	655	680	705	725	750	775	795	860	845	865					40	
			515	540	565	590	615	640	665	690	715	740	760	785	810	835	900	885						42	
				565	595	620	645	670	695	720	745	775	800	825	850	875	945							44	
		2 1/2"		620	645	675	700	725	755	780	810	835	860	890	915									46	
				675	700	730	760	785	815	845	870	900	930	955										48	
					730	760	790	820	850	880	910	935	965											50	

Ball-Bearing

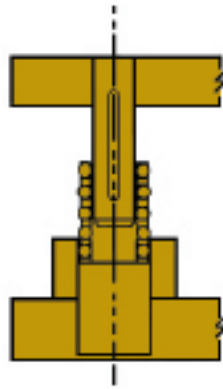
OPERATING DATA & DESIGN SELECTION

In component selection varied characteristics must be taken into consideration when selecting length of guide post, bushing and ball-bearing retainer, such as stroke, shut height and type of operation. To help in your selection we have supplied engineering data and instructions that should be used as a guide when making your component selection. The following conditions should be considered for the most effective performance in a specific application.



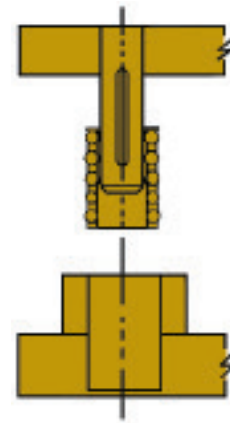
FULL CONTACT PRE-LOAD

In this condition the guide post, bushing and ball-bearing retainer remain in full contact throughout the stroke cycle. This selection is beneficial and recommended for high speed, high production, short stroke dies.



PRE-LOAD RELIEVED AT TOP OF STROKE

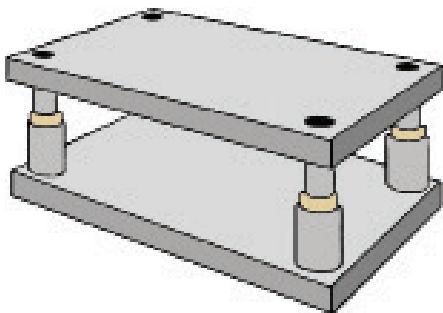
This may be accomplished by selecting the guide post bushing length that allows the guide post to disengage the bushing at the beginning of the stroke or cycle. This will result in the loss of pre-load while the ball retainer is still within the bushing. This condition may be utilized with long stroke dies. It also provides safe operation by eliminating pinch points and prevents foreign materials from entering the bushing. A further benefit is it allows for re-registration of the ball retainer on each stroke. Removal of the punch holder or die holder from press is possible without total removal of dies.



FULL DISENGAGEMENT

This condition is permissible when the ball retainer must totally disengage the bushing on applications requiring long strokes. Safety precautions (as outlined on page 12) should always be taken when employing this method.

It should also be noted that the above illustration depicts the proper way to assemble (insert) the guide post and ball-bearing retainer into the bushing.



When in a pre-loaded (rolling press fit) condition, the ball retainer will travel half the distance of movement. In a die set application it would be half the distance of the press stroke.

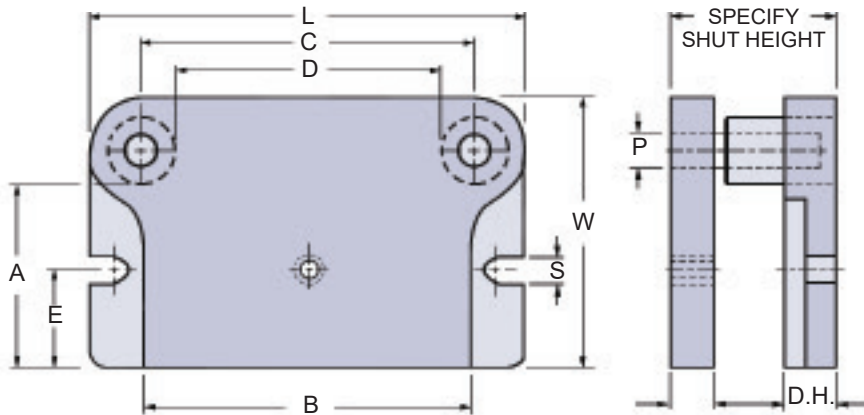
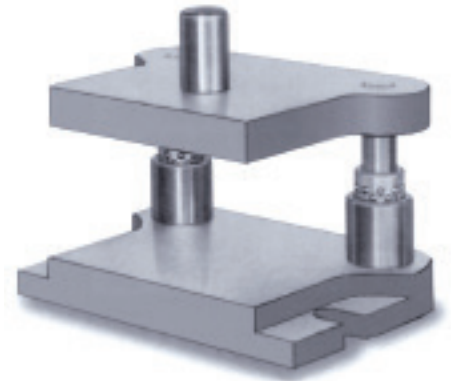
BALL BEARING ASSEMBLY LUBRICATION RECOMMENDATION

In operation of ball assembly, add lubricant once each 8-hour shift by spray or brush application. Use a light-weight spindle oil like Lamina Ball Lube.

NEVER USE GREASE

STANDARD BALL-BEARING DIE SETS

Mild Steel Plate – Stress Relieved upon Request
Also available in 4140 steel and Aluminum



Anchor Ball-Bearing Die Sets are made to traditionally high manufacturing requirements which have determined quality standards in the die set industry.

Lamina Components' Precision Retainer is made of heat-treated aluminum alloys with chrome alloy steel balls.

Lamina Components' Guide Posts and Bushings are manufactured to rigid standards using the highest quality steel alloys.

SHANKS AVAILABLE

1 1/2" dia. x 2 1/8	(1-1/4-12 NF)
2" dia. x 2 7/8	(1-1/4-12 NF)
2 1/2" dia x 2 7/8	(1-1/4-12 NF)
3" dia. x 3	(1-1/4-12 NF)

When ordering specify:

1. Type "Standard"
2. Dimension A & B
3. Thickness P.H. and D.H.
4. Minimum Shut Height
5. Stroke of Press
6. Size and location of Shank if required

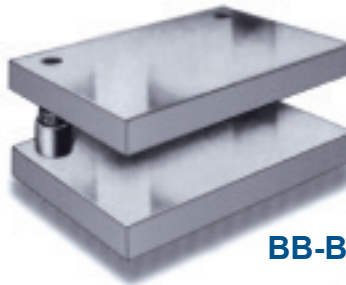
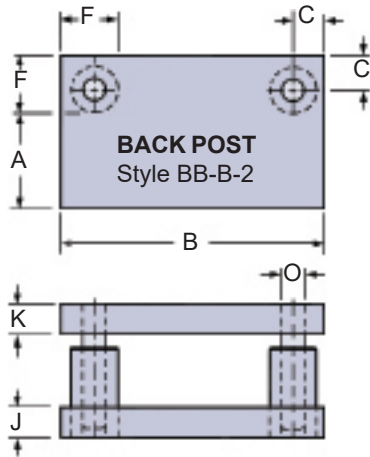
A	B	C	D	E	L	S	W	P.H.	D.H.	PIN		DEPENDS ON SHUT HEIGHT & STROKE
										Dia.	Length	
3 1/2	6	6	4	2	9	1 3/16	6	1 1/4	1 1/2	1		
3 1/2	10	10	8	2	13		6	1 1/4	1 1/2	1		
4 1/2	5	5	3	2 1/2	8		7	1 1/4	1 1/2	1		
4 1/2	9	9	7	2 1/2	12		7	1 1/4	1 1/2	1		
4 1/2	13	13	10 1/2	2 1/2	16 1/2		7 1/2	1 1/2	1 3/4	1 1/4		
5 1/2	6	6	4	3	9	1 1/16	8	1 1/4	1 1/2	1		
5 1/2	8	8	6	3	11		8	1 1/4	1 1/2	1		
5 1/2	10	10	7 1/2	3	13 1/2		8 1/2	1 1/2	1 3/4	1 1/4		
6 1/2	7	7	4 1/2	3 1/2	10 1/2		9 3/8	1 1/4	1 1/2	1 1/4		
6 1/2	9	9	6 1/2	3 1/2	13		9 3/4	1 1/2	1 3/4	1 1/4		
6 1/2	11	11	8 1/2	3 1/2	14 1/2		9 1/2	1 1/2	1 3/4	1 1/4		
6 1/2	13	13	10 1/2	3 1/2	16 1/2		9 1/2	1 1/2	1 3/4	1 1/4		
7 1/2	8	8	5 1/2	4	11 1/2		10 1/2	1 1/2	1 3/4	1 1/4		
7 1/2	10	10	7 1/2	4	13 1/2		10 3/8	1 1/2	1 3/4	1 1/4		
7 1/2	12	12	9 1/2	4	15 3/8		10 1/2	1 3/4	2	1 1/4		
8 1/2	9	9	6 1/2	4 1/2	12 1/2	1 1/16	11 3/8	1 1/2	1 3/4	1 1/4		
8 1/2	11	11	8 1/2	4 1/2	14 1/2		11 1/2	1 3/4	2	1 1/4		
8 1/2	13	13	10 1/4	4 1/2	16 3/4		11 3/4	1 3/4	2	1 1/2		
8 1/2	15	15	12 1/4	4 1/2	19		12	1 3/4	2	1 1/2		
9 1/2	8	8	5 1/2	5	11 1/2		12 1/2	1 1/2	1 3/4	1 1/4		
9 1/2	10	10	7 1/2	5	13 1/2		12 3/8	1 3/4	2	1 1/4		
9 1/2	12	12	9 1/4	5	16		13	1 3/4	2	1 1/2		
11 1/2	8	8	5 1/4	6	11 3/4		14 5/8	1 3/4	2	1 1/2		
11 1/2	10	10	7 1/4	6	13 3/4	14 3/4	1 3/4	2	1 1/2			
11 1/2	12	12	9 1/4	6	15 3/4	14 3/4	2	2 1/4	1 1/2			
11 1/2	15	15	12 1/4	6	18 3/4	14 3/4	2	2 1/4	1 1/2			

OTHER SIZES AVAILABLE TO YOUR SPECIFICATIONS

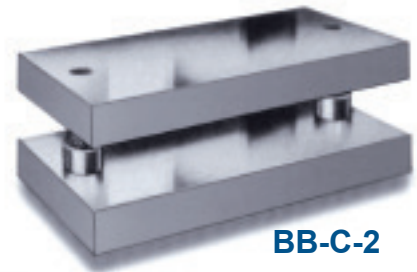


TWO POST BALL-BEARING DIE SETS

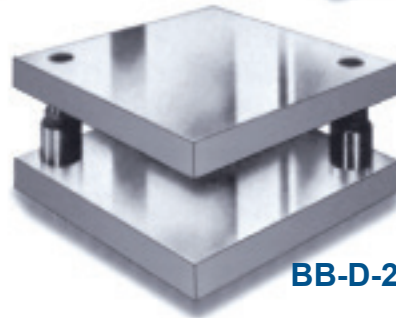
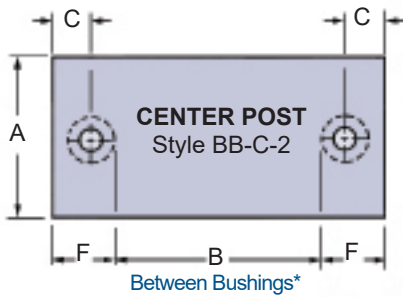
Mild Steel Plate – Stress Relieved upon Request
Also available in 4140 steel and Aluminum



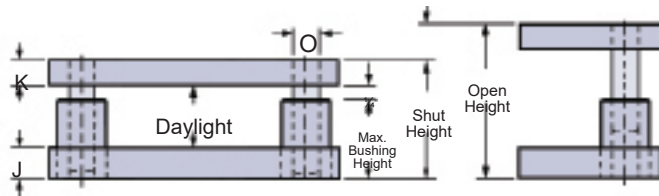
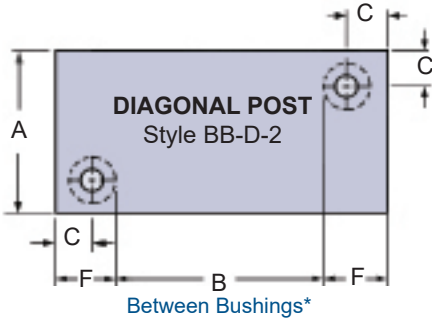
BB-B-2



BB-C-2



BB-D-2



*Two pin sizes used to prevent reversing

DIMENSIONAL VARIATIONS							
GUIDE POST	1	1 1/4	1 1/2	1 3/4	2	2 1/2	3
F	2 3/8	2 7/8	3 1/4	3 1/2	4	4 1/2	5 1/8
C	1 1/2	1 3/4	2	2 1/8	2 3/8	2 5/8	3

SUGGESTED MINIMUM DIMENSIONS																
WHEN	B=6 to 11"				B= 12 to 17"				B= 18 to 23"				B= 24 to 29"			
A=	J	K	O	P	J	K	O	P	J	K	O	P	J	K	O	P
6 to 8"	1 1/2	1 1/2	1 1/4	1	1 1/2	1 1/2	1 1/4	1	1 1/2	1 1/2	1 1/2	1 1/4	1 1/2	1 1/2	1 1/2	1 1/4
9 to 11"	1 1/2	1 1/2	1 1/2	1 1/4	1 1/2	1 1/2	1 1/2	1 1/4	1 3/4	1 3/4	1 3/4	1 1/2	1 3/4	1 3/4	1 3/4	1 1/2
12 to 17"					1 3/4	1 3/4	1 3/4	1 1/2	2	2	2	1 3/4	2	2	2	1 3/4
18 to 23"									2	2	2	1 3/4	2 1/2	2 1/2	2 1/2	2
24 to 29"													2 1/2	2 1/2	2 1/2	2
30 to 44"																
45 to 60"																

WHEN	B= 30 to 44"				B= 45 to 69"				B= 70 to 100"			
A=	J	K	O	P	J	K	O	P	J	K	O	P
6 to 8"	1 3/4	1 3/4	1 3/4	1 1/2	2	2	2	1 3/4	2	2	2	1 3/4
9 to 11"	2	2	2	1 3/4	2	2	2	1 3/4	2	2	2	1 3/4
12 to 17"	2 1/2	2 1/2	2 1/2	2	2 1/2	2 1/2	2 1/2	2	2 1/2	2 1/2	2 1/2	2
18 to 23"	2 1/2	2 1/2	2 1/2	2	2 1/2	2 1/2	2 1/2	2	2 1/2	2 1/2	2 1/2	2
24 to 29"	2 1/2	2 1/2	2 1/2	2	3	3	3	2 1/2	3	3	3	2 1/2
30 to 44"	3	3	2 1/2	2	3	3	3	2 1/2	3	3	3	2 1/2
45 to 60"					3	3	3	2 1/2	3 1/2	3 1/2	3	2 1/2

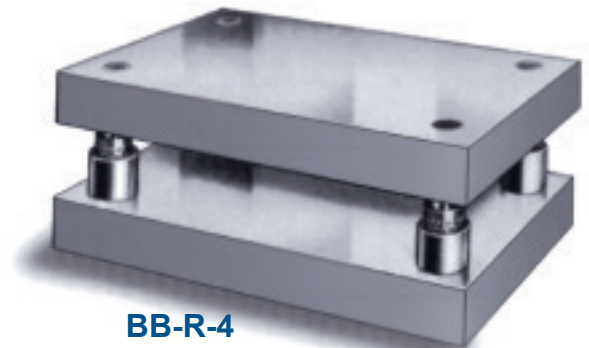
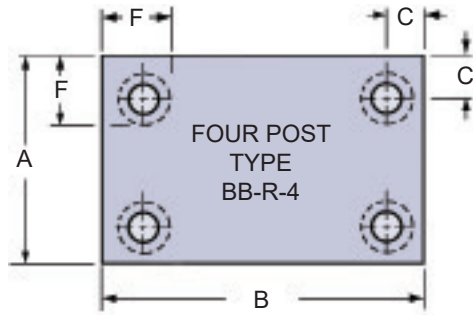
When ordering specify:

1. Type "Standard"
2. Dimension A & B
3. Thickness P.H. and D.H.
4. Minimum SHUT Height
5. Stroke of Press
6. Size and location of Shank if required

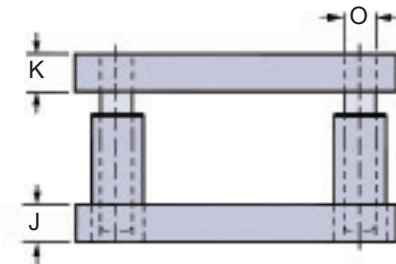


FOUR POST BALL-BEARING DIE SETS

Mild Steel Plate – Stress Relieved upon Request
 Also available in 4140 steel and Aluminum



BB-R-4



- Right front guide pin is offset .25" to prevent accidental reversing
- Special Die Sets are manufactured in any size or shape to your specifications
- Prices available on request – F.O.B. our plant
- Sales tax extra if applicable
- R4 Die Sets are made to order and may not be returned for credit

Special Die Sets are manufactured in any size or shape to your specifications.

SUGGESTED MINIMUM DIMENSIONS												
WHEN	B= 6 to 11"			B= 12 to 17"			B= 18 to 23"			B= 24 to 29"		
A=	J	K	O	J	K	O	J	K	O	J	K	O
6 to 8"	1 ¹ / ₄	1	1	1 ¹ / ₂	1	1 ¹ / ₄	1 ¹ / ₂	1 ¹ / ₄	1 ¹ / ₂	1 ¹ / ₂	1 ¹ / ₄	1 ³ / ₄
9 to 11"	1 ¹ / ₂	1	1	1 ¹ / ₂	1 ¹ / ₄	1 ¹ / ₄	1 ¹ / ₂	1 ¹ / ₄	1 ¹ / ₂	1 ³ / ₄	1 ¹ / ₂	1 ³ / ₄
12 to 17"				1 ¹ / ₂	1 ¹ / ₄	1 ¹ / ₄	1 ³ / ₄	1 ¹ / ₂	1 ¹ / ₂	1 ³ / ₄	1 ¹ / ₂	1 ³ / ₄
18 to 23"							1 ³ / ₄	1 ¹ / ₂	1 ¹ / ₂	2	1 ³ / ₄	1 ³ / ₄
24 to 29"										2	1 ³ / ₄	1 ³ / ₄
30 to 44"												
45 to 60"												
WHEN	B= 30 to 44"			B= 45 to 69"			B=70 to 100"					
A=	J	K	O	J	K	O	J	K	O			
6 to 8"	1 ³ / ₄	1 ¹ / ₂	2	2	1 ¹ / ₂	2						
9 to 11"	1 ³ / ₄	1 ¹ / ₂	2	2	1 ¹ / ₂	2	2 ¹ / ₂	1 ³ / ₄	2 ¹ / ₂			
12 to 17"	2	1 ³ / ₄	2	2 ¹ / ₂	1 ³ / ₄	2	2 ¹ / ₂	2	2 ¹ / ₂			
18 to 23"	2	1 ³ / ₄	2	2 ¹ / ₂	1 ³ / ₄	2	3	2	2 ¹ / ₂			
24 to 29"	2 ¹ / ₂	2	2	2 ¹ / ₂	2	2	3	2	2 ¹ / ₂			
30 to 44"	2 ¹ / ₂	2	2	3	2	2	3 ¹ / ₂	2 ¹ / ₂	2 ¹ / ₂			
45 to 60"				3	2	2	3 ¹ / ₂	2 ¹ / ₂	2 ¹ / ₂			

When ordering specify:

1. Type "Standard"
2. Dimension A & B
3. Thickness P.H. and D.H.
4. Minimum Shut Height
5. Stroke of Press
6. Size and location of Shank if required

Committed to Quality & Customer Satisfaction

Anchor Danly is committed to be the “customer focused” world-class supplier of choice to the metal-working and plastics forming industry.

We will help our customers to compete globally by providing innovative and value added products and services.



Anchor Die Sets

2590 Ouellette Avenue, Windsor, ON, Canada N8X 1L7
Tel: 519-966-4431, 800-265-5007; Fax: 519-966-3594
E-mail: wineng@anchordanly.com

1450 Alphonse D-Roy, Montreal, QC, Canada H1W 2K8
Tel: 514-525-5560, 800-263-5560; Fax: 514-525-7835
E-mail: moneng@anchordanly.com

311 Pinebush Road, Cambridge, ON, Canada N1T 1B2
Tel: 519-740-3060, 800-265-7842; (Canada only); Fax: 519-740-8213
E-mail: cameng@anchordanly.com

Detroit, MI USA
Tel: 248-547-5910, 800-543-3790; Fax: 248-547-5918, 800-963-0400
E-mail: wineng@anchordanly.com

255 Industrial Parkway, Ithaca, MI USA 48847-9476
Tel: 989-875-5400, 1-800-243-2659; Fax: 989-875-3719, 1-800-833-2659
E-mail: quotes@anchordanly.com

www.anchordanly.com



Registered
to ISO 9001



Registered
to ISO 14001